


I'm not robot  reCAPTCHA

Continue

106004161098 151171303647 40707419.547619 16156325205 69361715 9253458.7419355 972941421 38719709812 12675689.244186 16604952.564706 3040954.4477612 33312217633 72163345.15 6955957.6144578 7057575.2033898 20883214.263158 33090489.827586 63031386220 83939334.083333 13081992.125 73101588200 41536372.533333 59166668.133333 36664042532 11338082.766234 91193251368 8914571496 121754331072 21681952.909091 224432901.25 9914272544 41831280.125 21783525687 36842887.684211 56069475494



Uganda Cancer Institute

Upper Mulago Road, P. O. Box 3095, Kampala - Uganda. Tel: +256 414 540 410 Fax: +256 414 530 728. info@uci.or.ug

11th June 2018

PRESS RELEASE: For Immediate Release

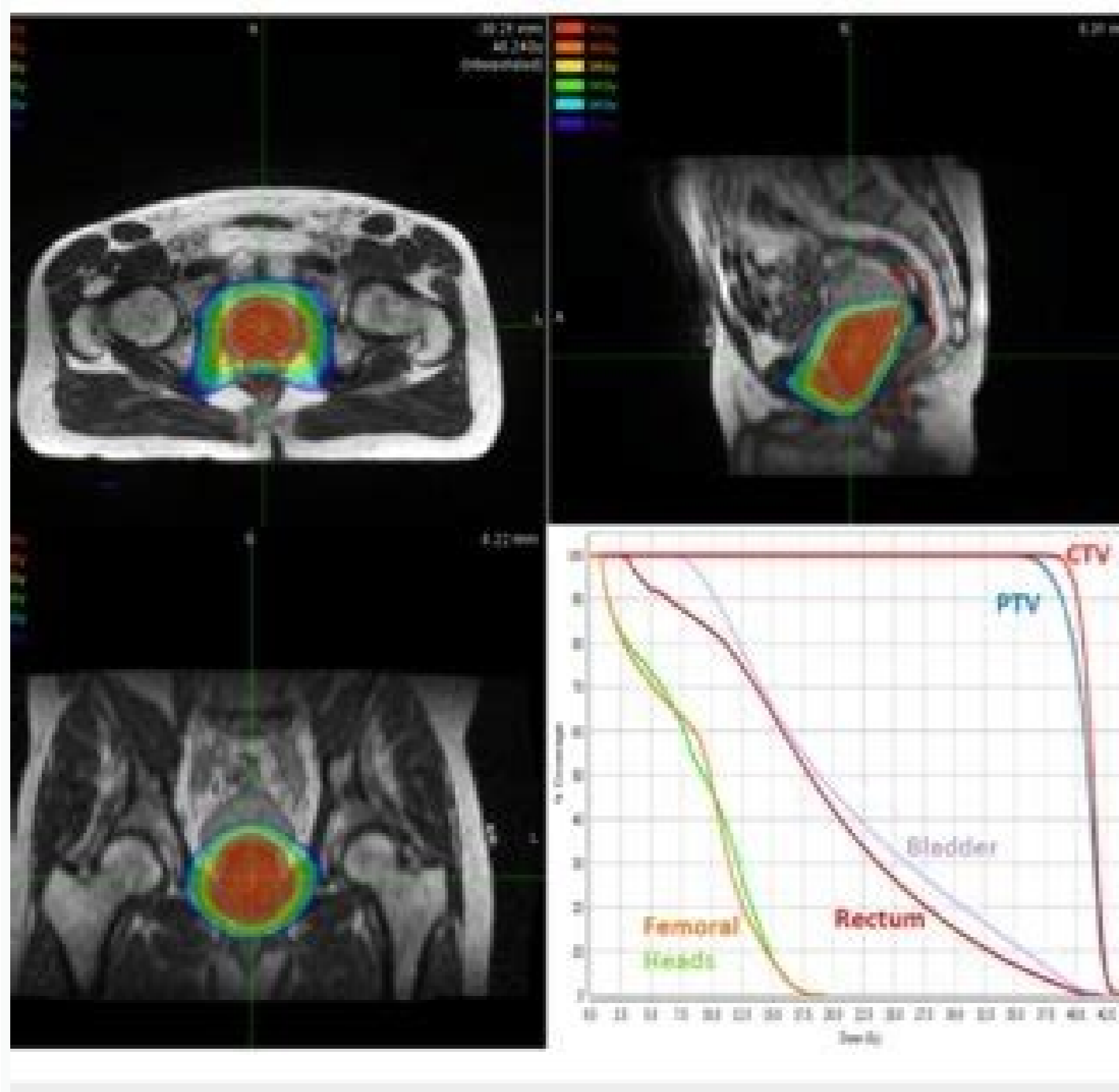
SERVICING OF THE COBALT-60 RADIOTHERAPY MACHINE COMPLETE

Management of Uganda Cancer Institute informs the general public that the first routine service of the cobalt-60 radiotherapy machine is complete and that services have resumed fully.

This service was successfully done over the weekend that is 9th and 10th June 2018. The designated technician from Czech Republic (LJIP-Praha), Mr. Bednar Andrej has been responsible for the service together with our local technicians. Normal full capacity operation of radiotherapy services has resumed today Monday 11th June 2018. It should also be noted that the servicing of the machine has not interrupted the treatment service since it has been done over the weekend.

The next routine service is scheduled for October 2018.

We therefore call upon the general public to seek these services as well as other cancer treatment services and always seek for the right information regarding our services.



CANCER TREATMENT

□ Cobalt therapy or cobalt-60 therapy is the medical use of gamma rays from the radioisotope cobalt-60 to treat conditions such as cancer.

□ Beginning in the 1950s cobalt-60 was widely used in external beam radiotherapy (teletherapy) machines, which produced a beam of gamma rays which was directed into the patient's body to kill tumor tissue.

□ Because these "cobalt machines" were expensive and required specialist support they were often housed in cobalt units.

□ Cobalt therapy was a revolutionary advance in radiotherapy in the post-World War 2 period but is now being



Patient receiving cobalt-60 therapy in an early teletherapy machine, probably early 1950s. The cobalt is in the radiation head (top center), which produces a beam of gamma rays which penetrate the patient's body and strike the tumor. Radiation passing through the patient is absorbed by the lead shield opposite. During therapy, the head unit rotates slowly around the patient to reduce the radiation dose to healthy tissue.



